



2024 NFHS FOOTBALL RULES POWERPOINT



**PLAY.
PERFORM.
COMPETE.
TOGETHER.**

Copyright© 2024 National Federation of State High School Associations. All Rights Reserved.

This copyrighted power point is presented by the NFHS. This material shall only be reproduced or distributed by member state associations for teaching and training purposes. Distribution to the public is prohibited without the express written consent from the NFHS. Please contact Davis Whitfield, COO at dwhitfield@nfhs.org with requests.



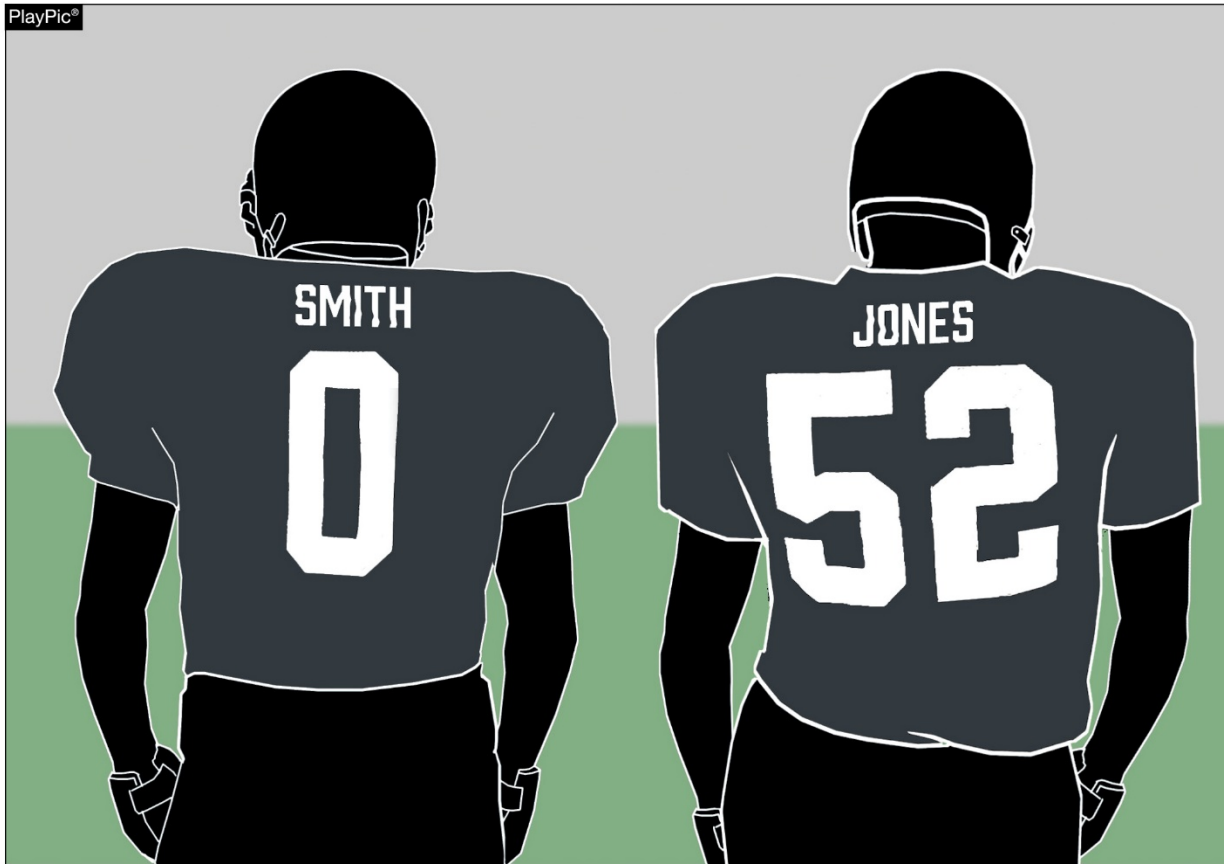
2024 NFHS FOOTBALL RULES CHANGE



**PLAY.
PERFORM.
COMPETE.
TOGETHER.**



HOME JERSEYS RULE 1-5-1b(3)



LEGAL

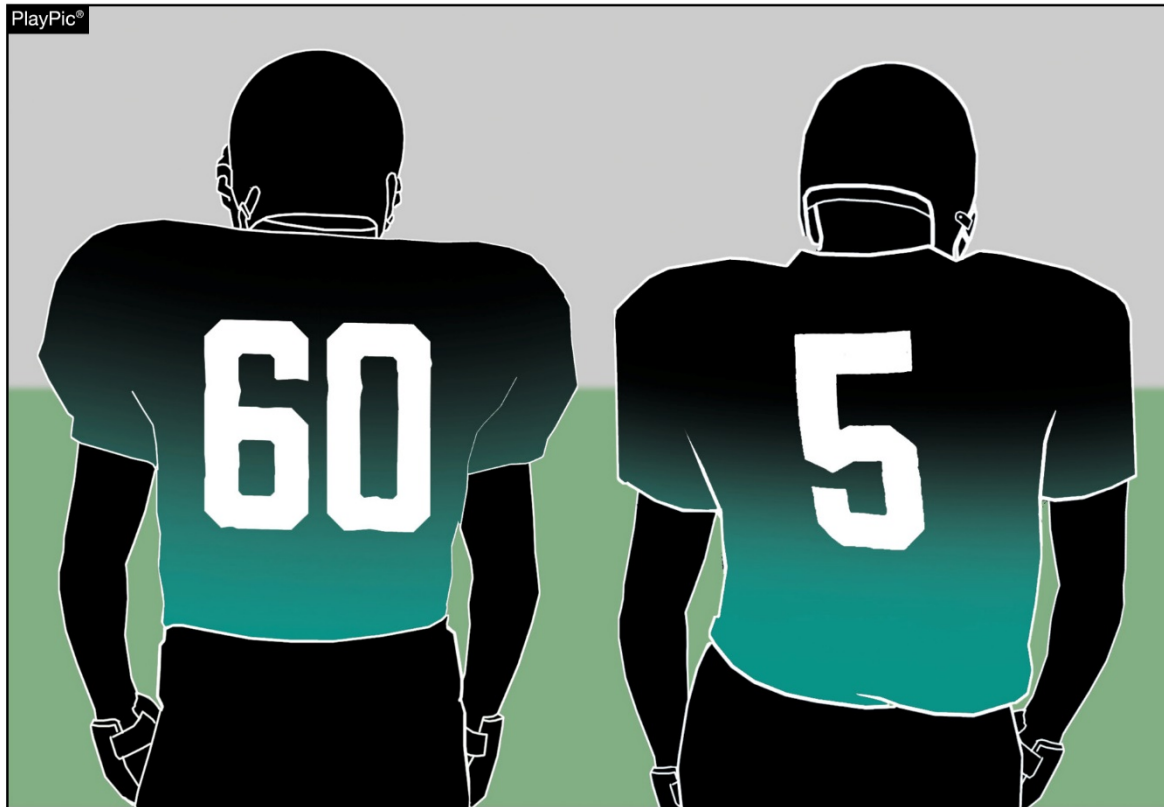
Jerseys of the home team shall all be the same dark color(s) that clearly contrasts to white.



PLAY.
PERFORM.
COMPETE.
TOGETHER.



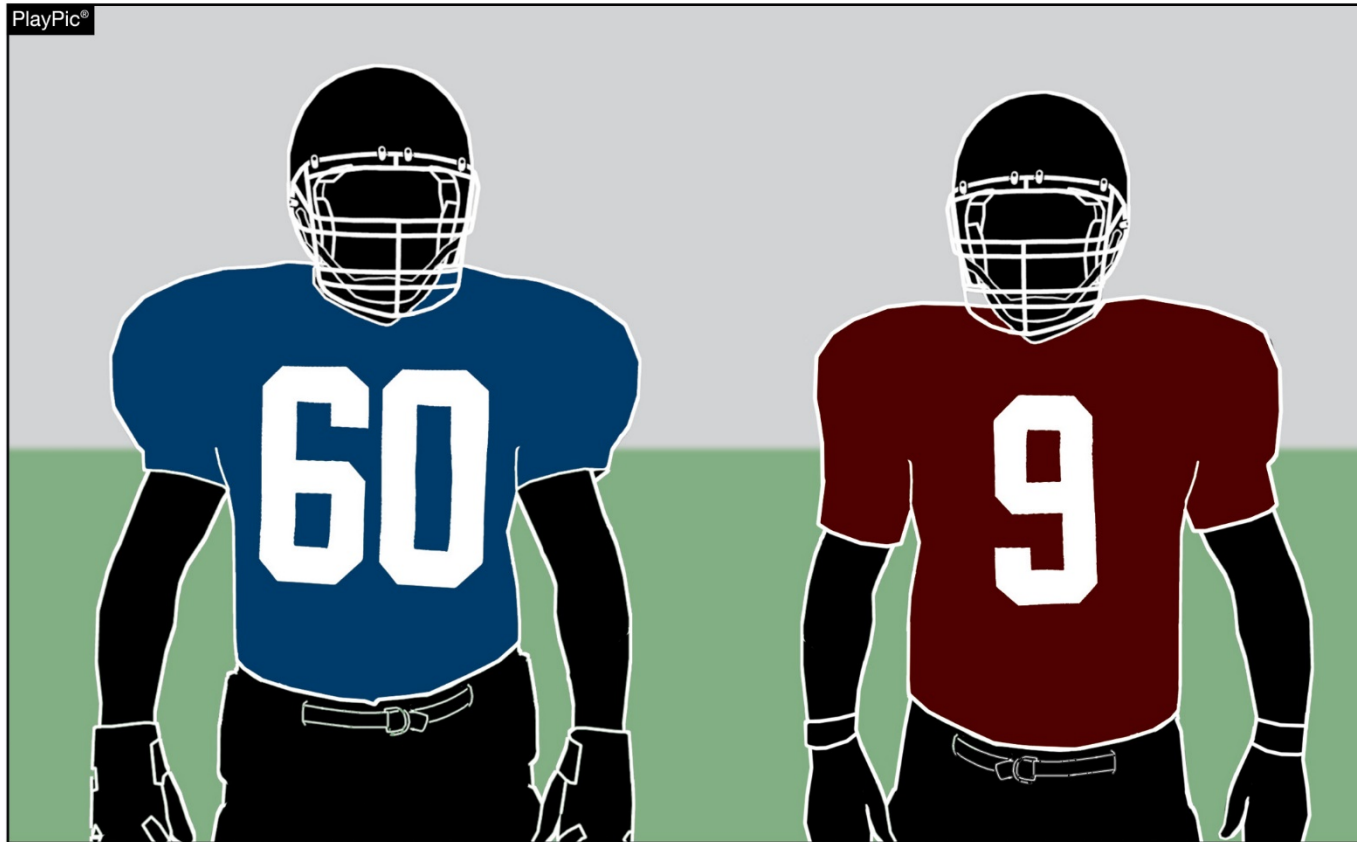
HOME JERSEYS RULE 1-5-1b(3)



These jerseys are legal because it is the same dark colors. All players on this home team shall wear the same dark colored jerseys in order to comply with the rule.



HOME JERSEYS RULE 1-5-1b(3)



These jerseys of the home team are illegal because all members of the home team must wear the same dark color(s) that clearly contrasts to white.

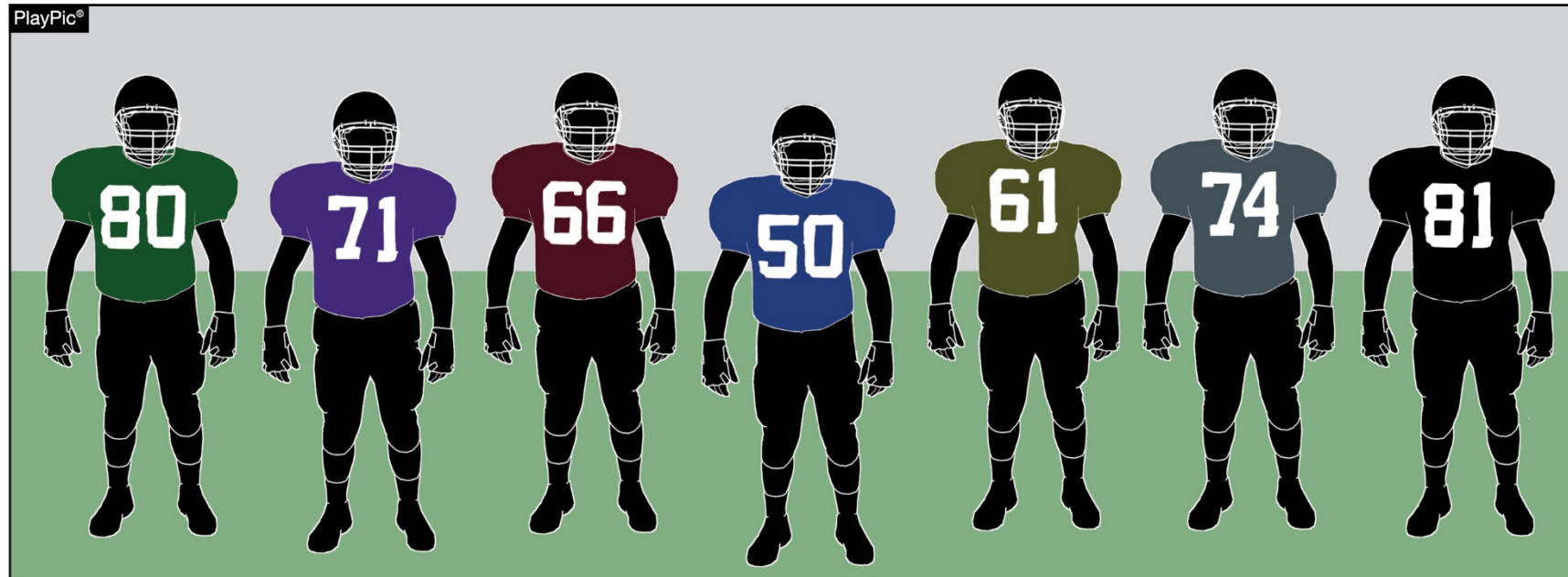
ILLEGAL



PLAY.
PERFORM.
COMPETE.
TOGETHER.



HOME JERSEYS RULE 1-5-1b(3)



These jerseys of the home team are illegal because all members of the home team must wear the same dark color(s) that clearly contrasts to white.



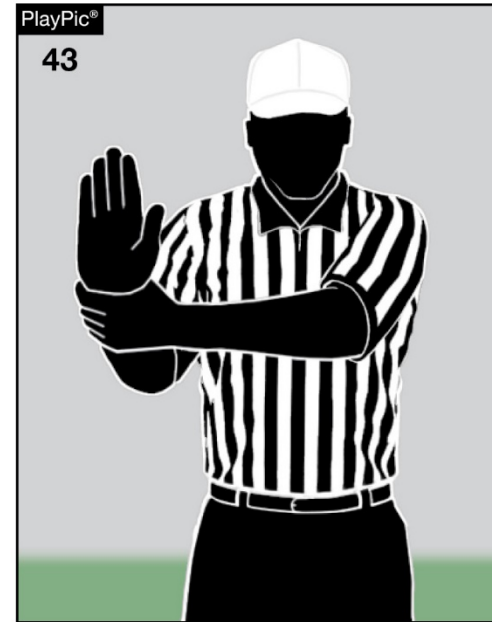
2024 NFHS FOOTBALL EDITORIAL CHANGES



**PLAY.
PERFORM.
COMPETE.
TOGETHER.**



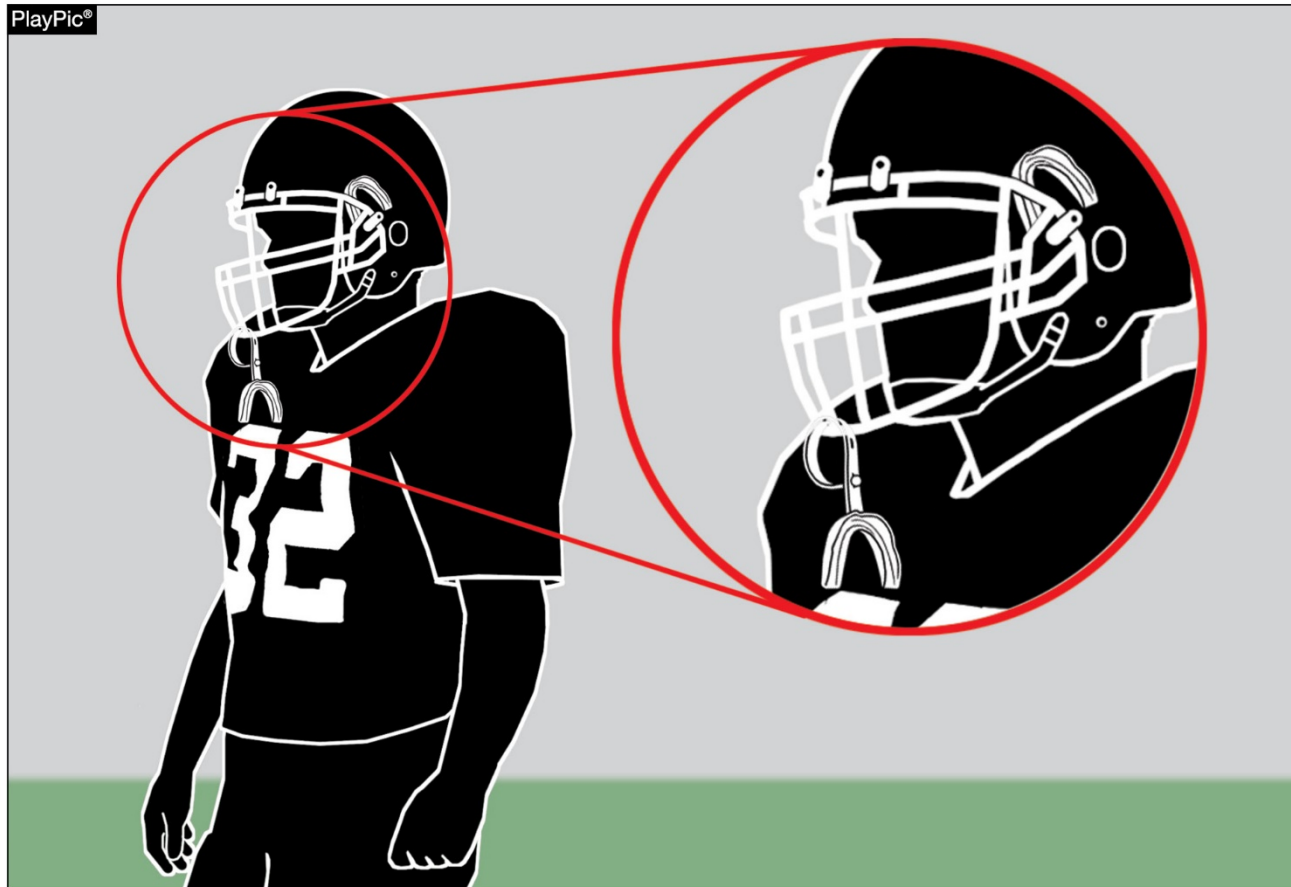
SIGNAL CHART



Signal 43 will be used to indicate illegal use of hands/arms as well as illegal block. Signal 42, formerly used for illegal use of hands/arms, will indicate holding only.



TOOTH AND MOUTH PROTECTOR RULE 1-5-1d(5)a



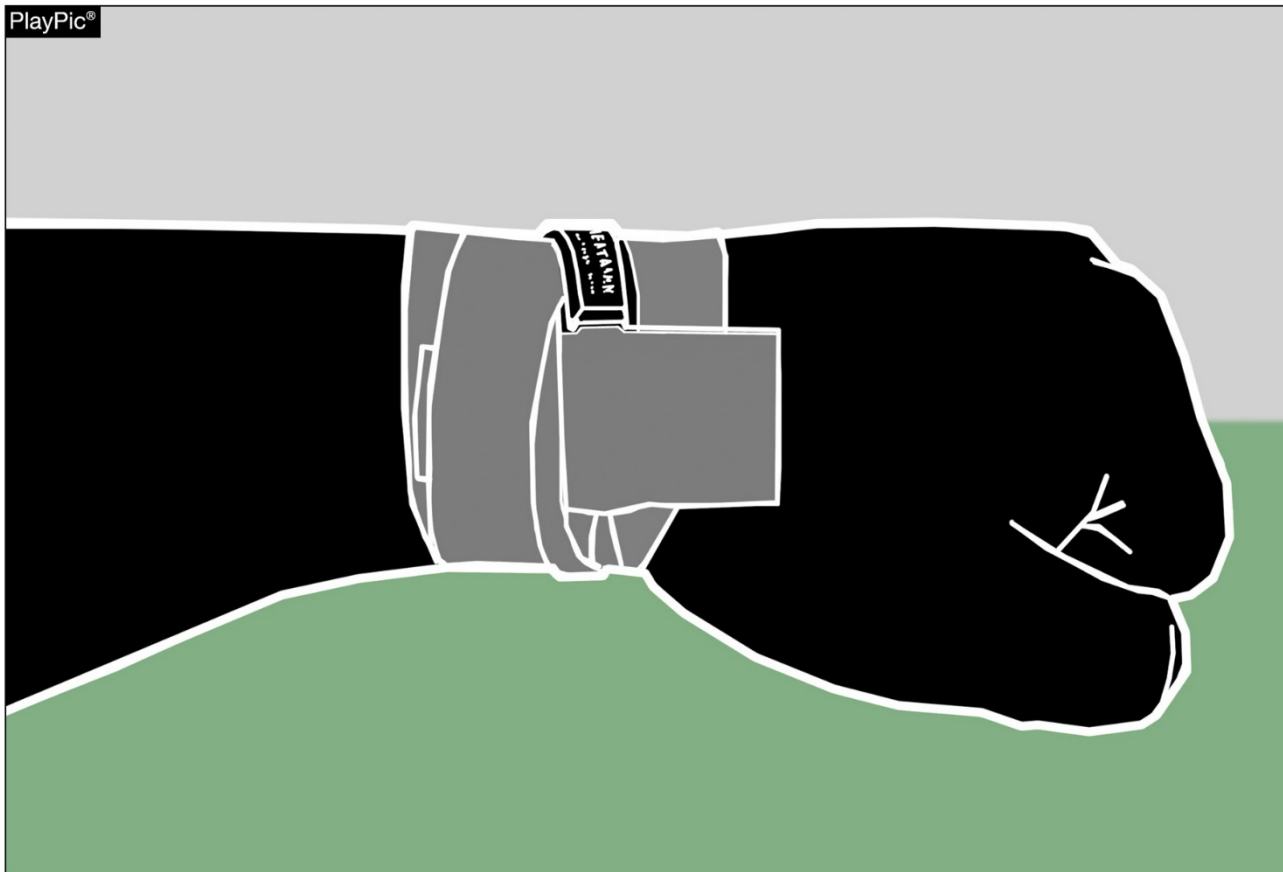
Players may have only one tooth and mouth protector.



PLAY.
PERFORM.
COMPETE.
TOGETHER.

ILLEGAL EQUIPMENT

RULE 1-5-3c(6)

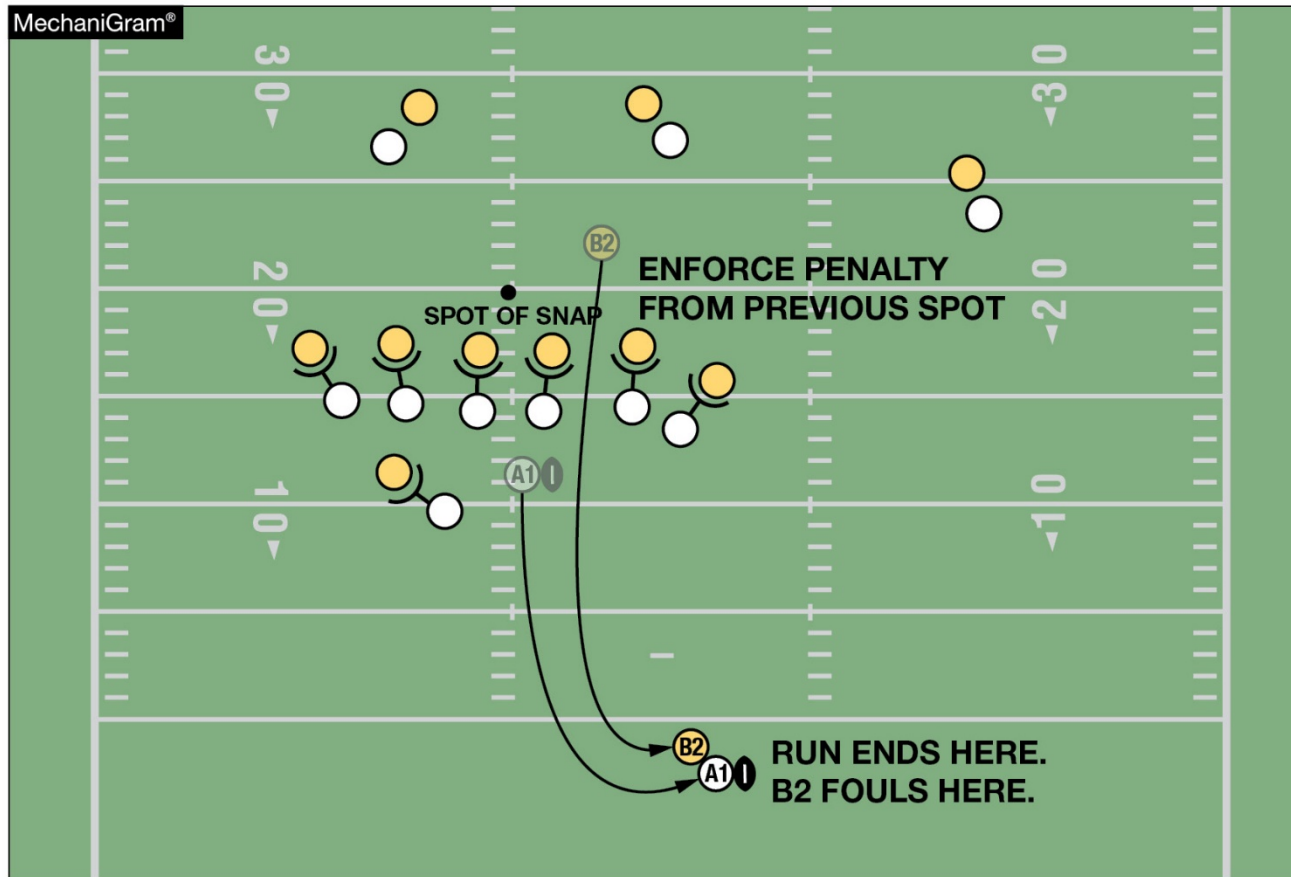


Religious medals and a medical alert such as the one shown in the PlayPic are not considered jewelry. Religious medals or other religious items must be taped to the body and worn under the uniform. A medical-alert indicator must be taped to the body and may be visible.



BASIC SPOTS

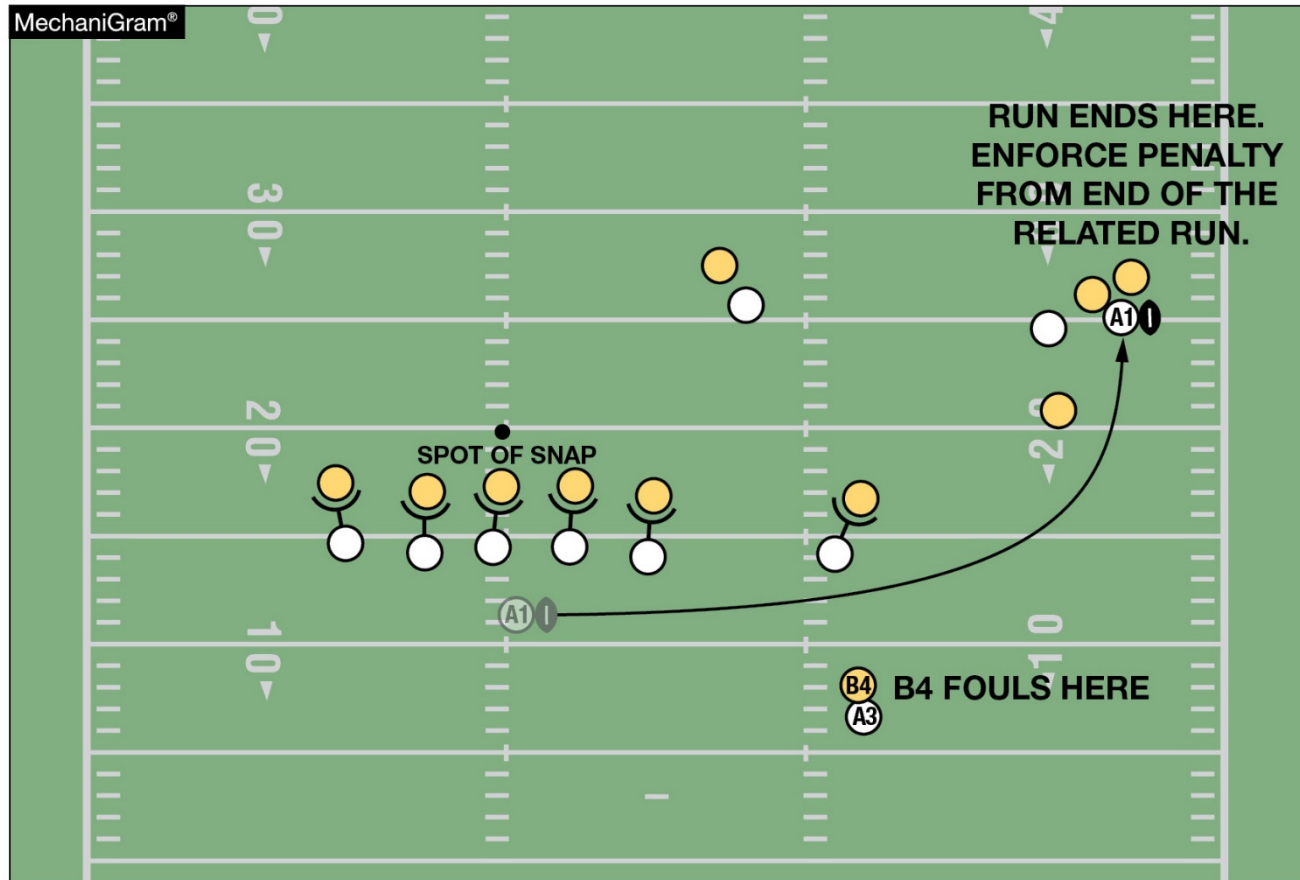
RULE 10-4-2d



The penalty for this foul is enforced from the previous spot. Under the old rule, the penalty would have been enforced from the goal line.



BASIC SPOTS RULE 10-4-6a

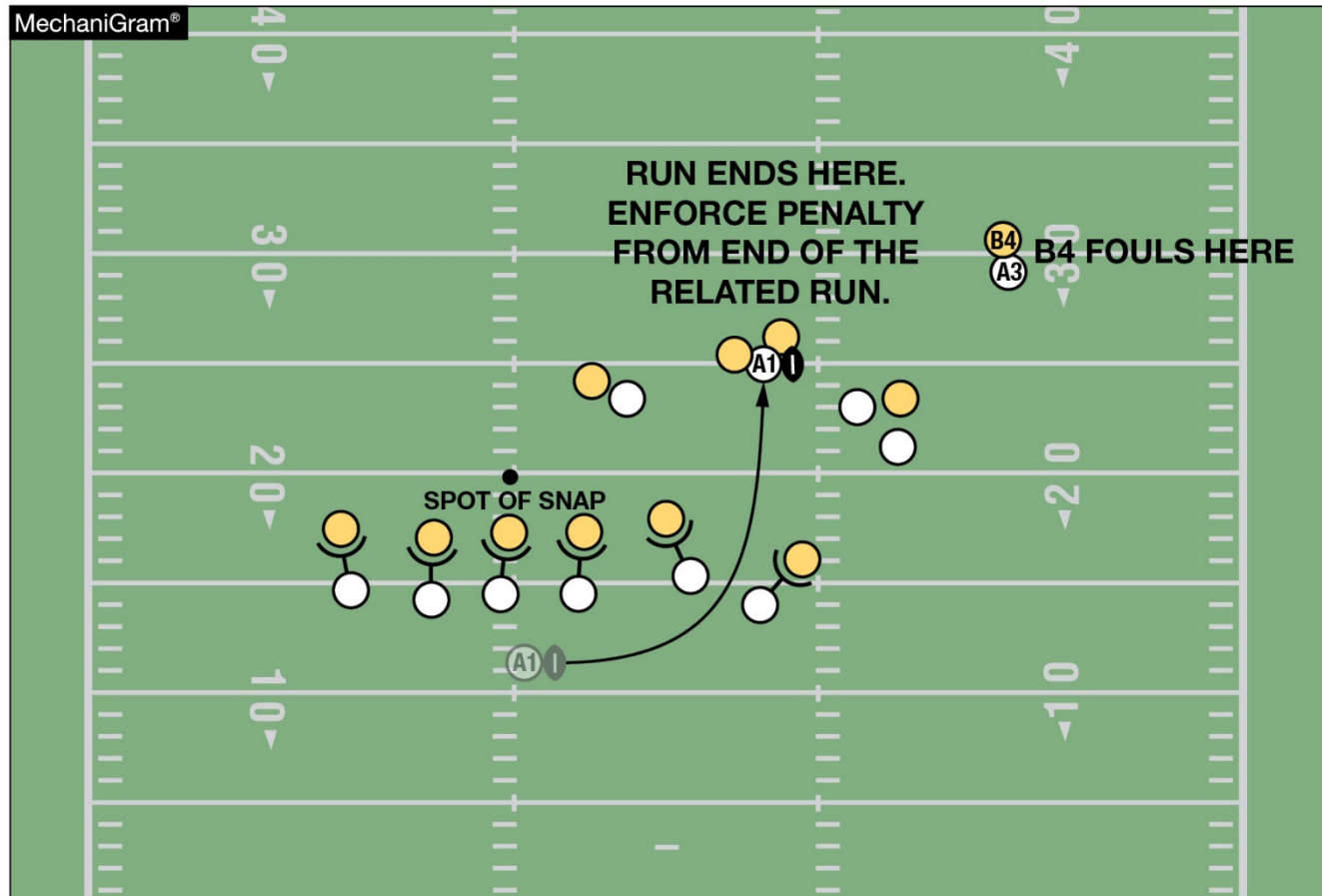


The basic spot is the end of the run or related run for a foul by B when the run or related run ends beyond the line of scrimmage.



BASIC SPOTS

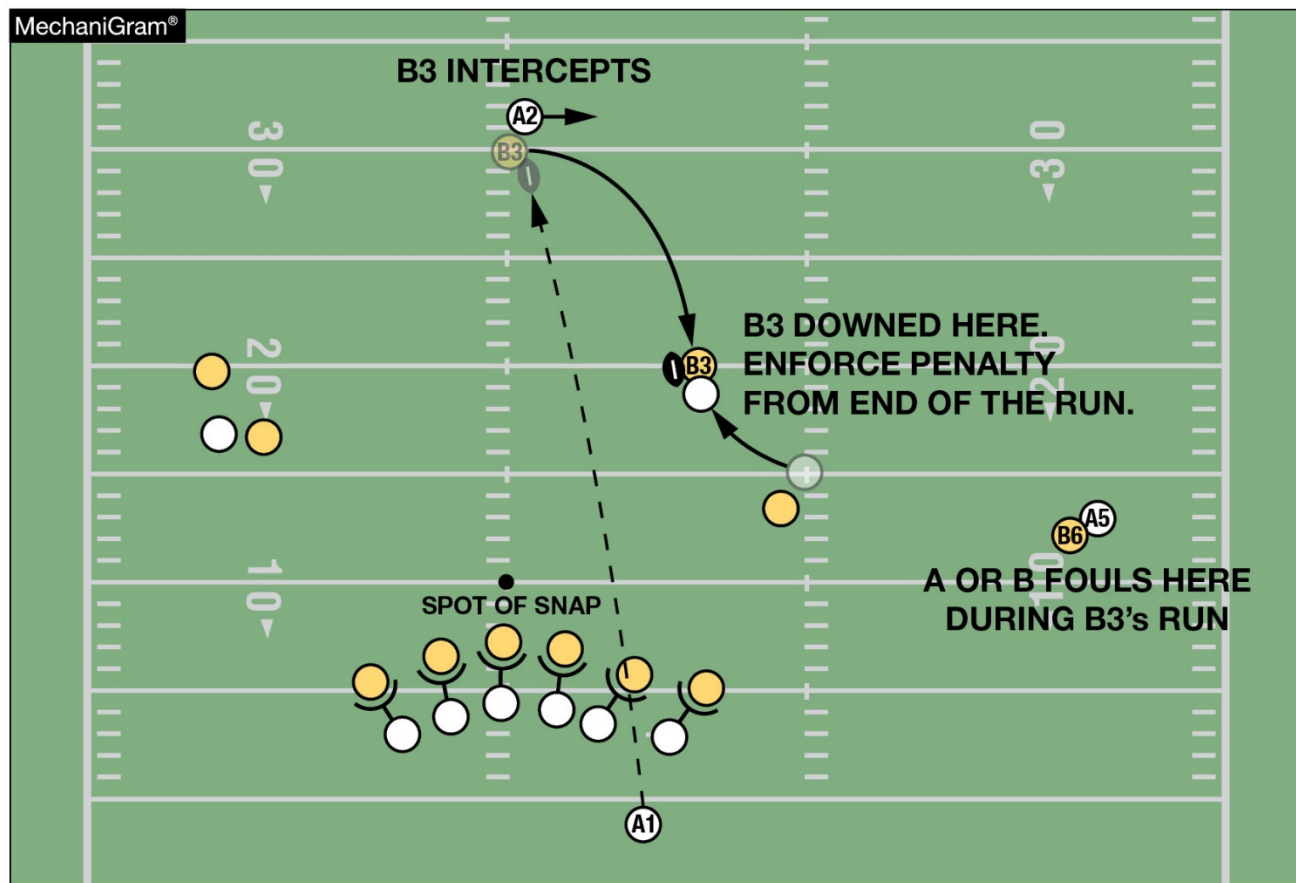
RULE 10-4-6a



The basic spot is the end of the run or related run when the run or related run ends beyond the line of scrimmage and the foul occurs in advance of the end of the run or related run.



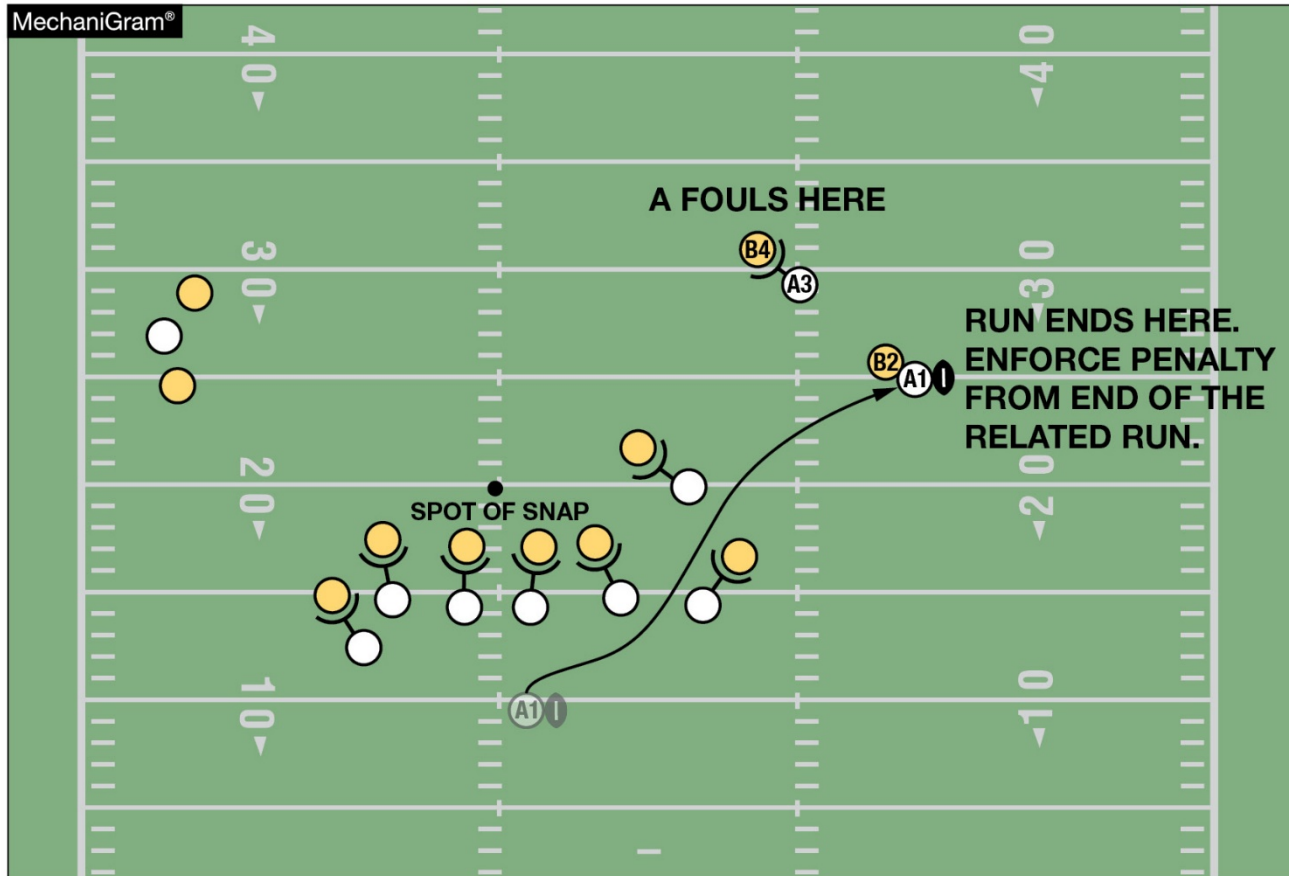
BASIC SPOTS RULE 10-4-6b



The basic spot is the end of the run or related run for a foul that occurs beyond the end of the run or related run following a change of possession.



BASIC SPOTS RULE 10-4-6c



The basic spot is the end of the run or related run for a foul by A that occurs beyond the line of scrimmage during a running play.

2024 NFHS FOOTBALL EDITORIAL CHANGES

Football Helmet Warning Statement	Added the words “is certified by the Safety Equipment Institute (SEI) to the” to the description of the NOCSAE standards process.
1-3-1b, 1-3-1i(5)	Added further clarification to the description on how the placement of the laces on the ball is measured when being produced and tested.
1-3-1g	Added the new 2024 format image for the NFHS Authenticating Mark.
1-5-1a(1)	Added new Figure 1-5-1a – NOCSAE Standard Logo for helmet.
1-5-1b(2), 1-5-1b(3)	Reformatted the jersey rules for clarification.
1-5-1c(5)	Noted that this rule on jersey numbers takes effect in 2024.
1-5-2b	Added new Figure 1-5-2b – NOCSAE Standard Logo for glove and SFIA Specification Logo for glove.
1-5-3b(6)	Added new Figure 1-5-3b(6) – NOCSAE Standard Logo for shin guard.
TABLE 1-7 (7)	Changed the rules reference in the Table for “Authorize the wearing of a commemorative/memorial patch.”

2024 NFHS FOOTBALL EDITORIAL CHANGES

1-8	Further clarified State Association Accommodations.
2-8	Split the definition on Encroachment up into two Articles and updated the rules references within the Rule.
2-32-16	Added further clarification on when a player is no longer defenseless.
5-2-4	Updated the rules reference within the Rule.
7-2 PENALTY	Deleted Art. 5d from the Illegal Numbering Penalty.
TABLE 7-5	Added “or Related Run” to the Enforcement Spot for Illegal Forward Pass.
9-2 PENALTY	Changed the signal reference for “Illegal Use of Hands or Arms” to signal 43.
9-5-1g, 9-8-1j	Further clarified and standardized rules language that has been approved by the NFHS Rules Review Committee for all 2024-25 NFHS Rules Books on alcohol and tobacco.
9-8 PENALTY	Further clarified the responsibility of the head coach within the Penalty.



PLAY.
PERFORM.
COMPETE.
TOGETHER.



2024 NFHS FOOTBALL EDITORIAL CHANGES

10-3-1c, NOTE	Deleted letter c and the NOTE in the Rule under a “Loose-Ball Play Action.”
10-4	Further clarified Basic Spot.
10-5	Further clarified Special Enforcement Rules and deleted some Articles.
TABLE 10-4	Revised TABLE 10-4.
PENALTY SUMMARY	Updated the signal references in LOSS of 10 YARDS for “Illegal Blocking,” “Runner Grasping a Teammate” and “Illegal Use of Hands or Arms” to signal 43.



2024 NFHS FOOTBALL RULES REMINDERS



**PLAY.
PERFORM.
COMPETE.
TOGETHER.**

2024 - FOOTBALL JERSEY NUMBERS

RULES 1-5-1c; 1-5-1c(5)



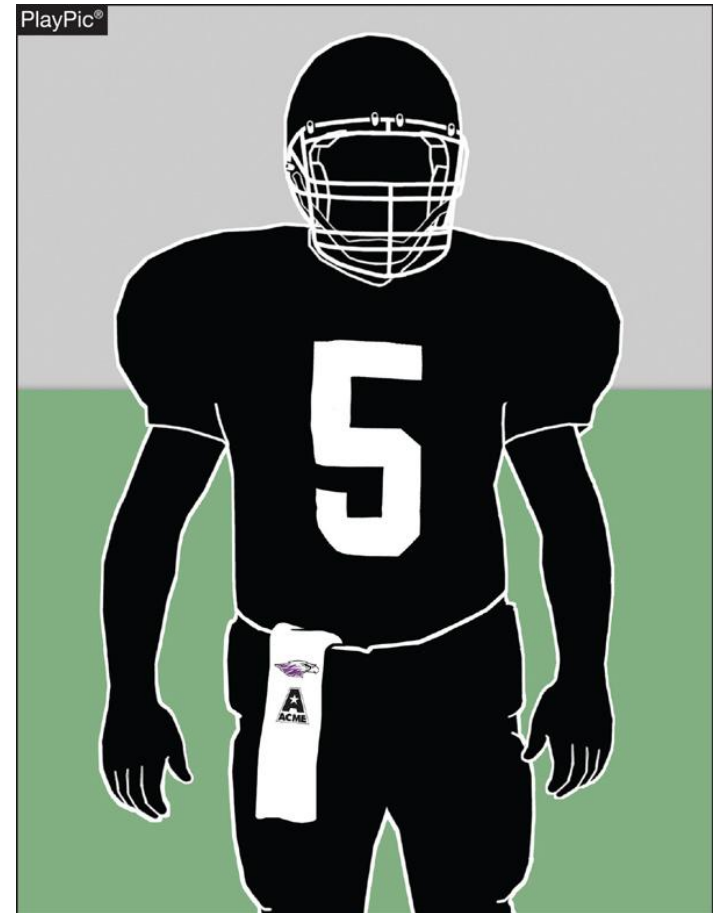
Effective with the 2024 season, the entire body of the number (the continuous horizontal bars and vertical strokes) shall be a single solid color that clearly contrasts with the body color of the jersey.

UNIFORM ADORNMENTS - TOWELS

RULE 1-5-3a(5)a 4, 5

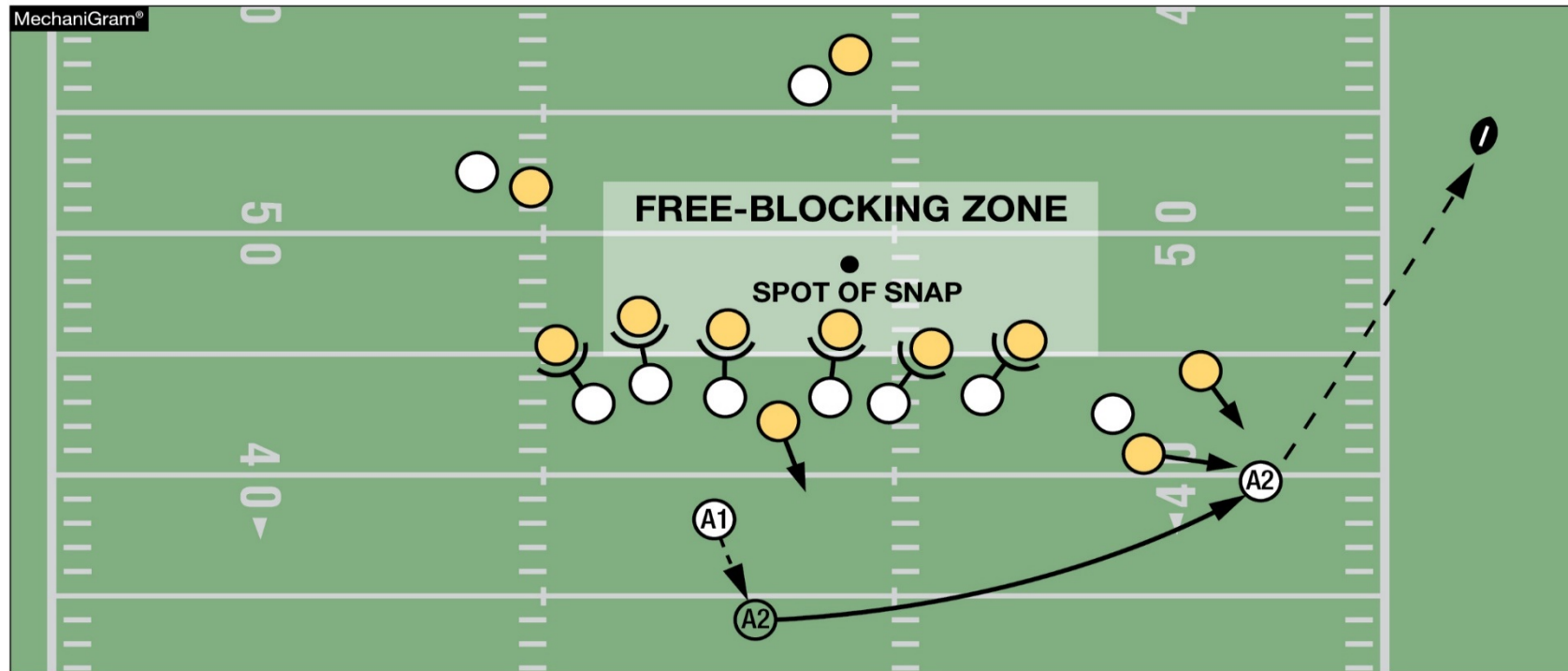
It is legal for a player to have one moisture-absorbing solid-colored towel that has no more than one visible manufacturer's logo/trademark reference that does not exceed 2¼ square inches and does not exceed 2¼ inches in any dimension; and has no more than one school logo/trademark reference that does not exceed 2¼ square inches and does not exceed 2¼ inches in any dimension.

Towels do not have to be the same solid color for each player.



INTENTIONAL GROUNDING EXCEPTION

RULE 7-5-2d EXCEPTION 2a, c, TABLE 7-5-2 d EXCEPTION 2a, c, TABLE 7-5 (1) d
EXCEPTION 2a, c



This is a foul for intentional grounding since A2 is the second player to possess the ball. Only the player who possessed the ball after the snap ends may take advantage of the intentional grounding exception.

NFHS AUTHENTICATING MARK UPDATE



Current Logos

New Logo



Specifications

- Do not use the NFHS Authenticating Mark without prior written approval from the NFHS
- This mark is for use of licensees only.

Minimum size

- **Inflatable Balls - 2 ½"** (Football)
- On a ball, the NFHS logo may be smaller than manufacturer's logo, but should be placed in proximity to the manufacturer's name for easy identification. Allow enough space around the logo so it can be easily recognized as distinct and separate.
- Reproduce the logo only from the vector artwork provided here or on Direct Licensing Hub. Do not copy, scan art electronically or use as a template to redraw the symbol.

Note: If sizing or specifications do not work well in your particular design situation, contact K12 Licensing.

A current list of NFHS authenticated products can be found at www.nfhs.org, Resources, Authenticating Mark



PLAY.
PERFORM.
COMPETE.
TOGETHER.

FOOTBALL

NFHS AUTHENTICATING MARK



OR



PLAY.
PERFORM.
COMPETE.
TOGETHER.



2024 NFHS FOOTBALL POINTS OF EMPHASIS



**PLAY.
PERFORM.
COMPETE.
TOGETHER.**

2024 NFHS FOOTBALL POINTS OF EMPHASIS

1. Sportsmanship and Altercation Prevention and Protocol
2. Player Equipment and Enforcement
3. Formations



PLAY.
PERFORM.
COMPETE.
TOGETHER.

SPORTSMANSHIP AND ALTERCATION PREVENTION AND PROTOCOL



Coaches must teach, promote, model and set clear standards of behavior for themselves, players and fans. Game officials must fairly and consistently enforce NFHS rules in all aspects related to unsporting behavior by coaches and participants. Everyone involved must clearly understand that education-based athletics is an extension of the classroom and is about more than just winning and losing.

SPORTSMANSHIP AND ALTERCATION PREVENTION AND PROTOCOL



Fights that escalate beyond the initial incident tend to do so because others run toward the fight. Coaches are urged to instruct their team and even practice what to do in case an altercation occurs.

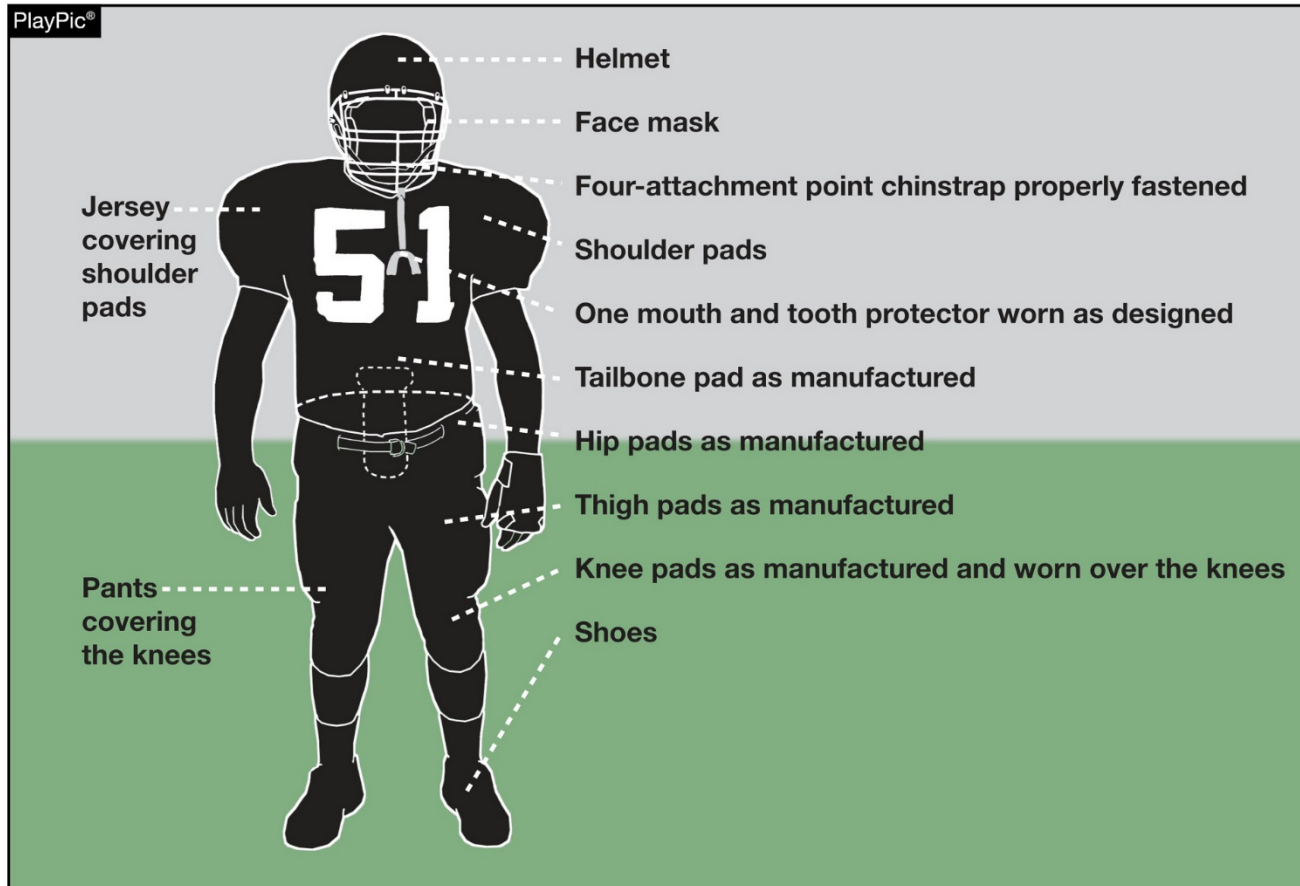
SPORTSMANSHIP AND ALTERCATION PREVENTION AND PROTOCOL



Postgame handshake line protocol should be followed by both teams. Among the points, administrators and security from both schools should be stationed on the field in close proximity to the handshake line. One team should be on the right and the other team should be on the left. Players from one team should not be allowed to walk down both sides of the line.



PLAYER EQUIPMENT AND ENFORCEMENT

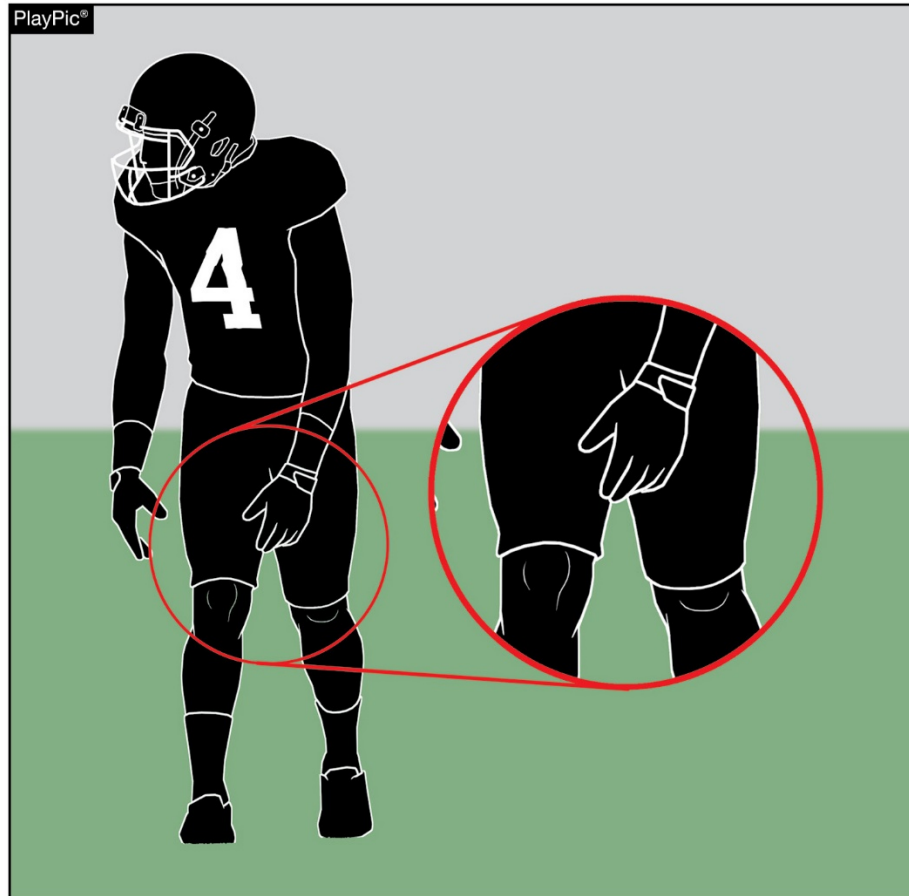


To support the safety of all participants, players must wear equipment and uniforms that are properly fitted and worn as intended by the manufacturer. Before starting each game, the head coach must verify that all players are properly and legally equipped.



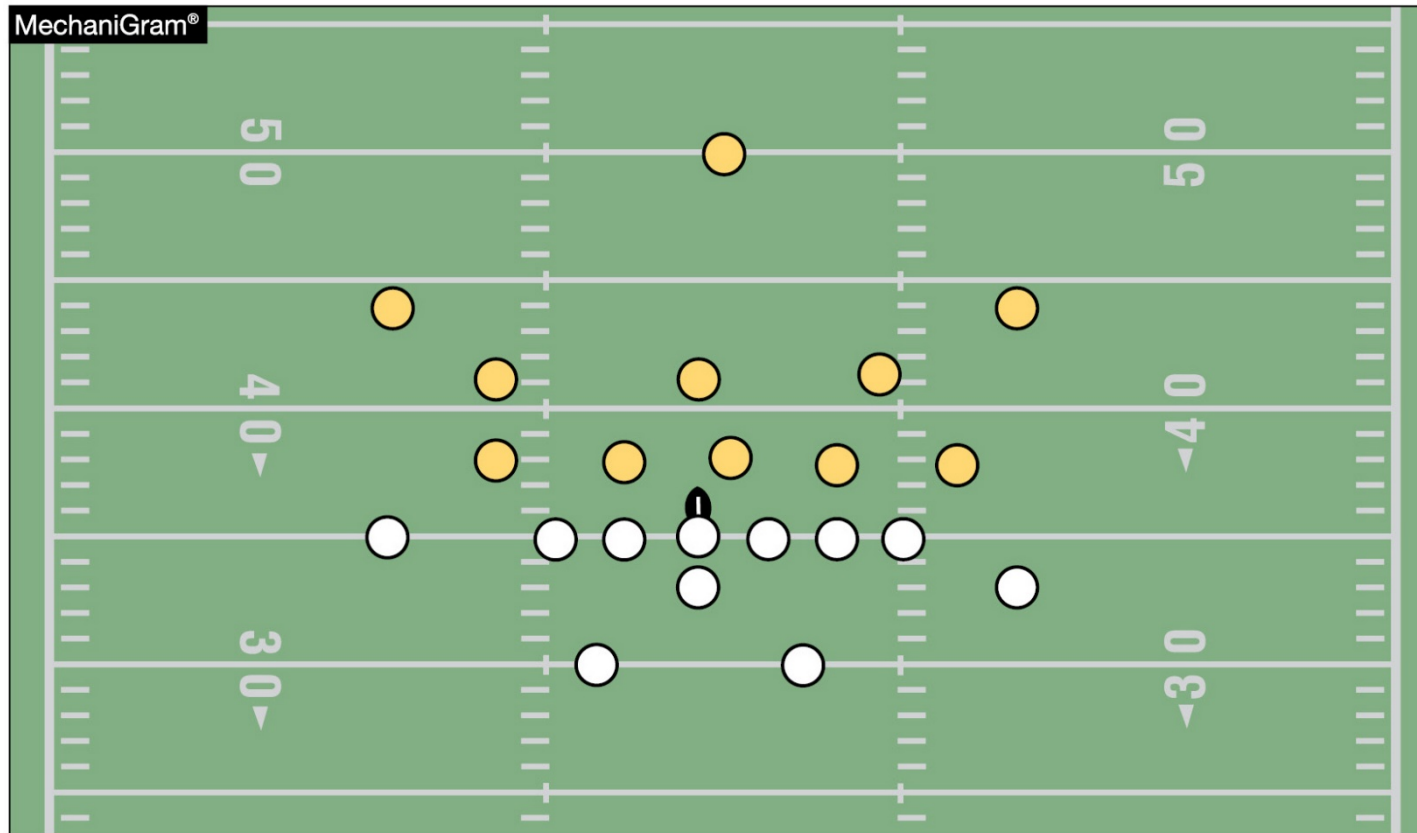
PLAY.
PERFORM.
COMPETE.
TOGETHER.

PLAYER EQUIPMENT AND ENFORCEMENT



Due to potential injury, it is essential that players only be allowed to participate if their pants and knee pads comply with the rules. Pants must completely cover the knees, and knee pads must be worn over the knee. Game officials should be watchful and proactive in addressing potential equipment, and more specifically, knee pad issues.

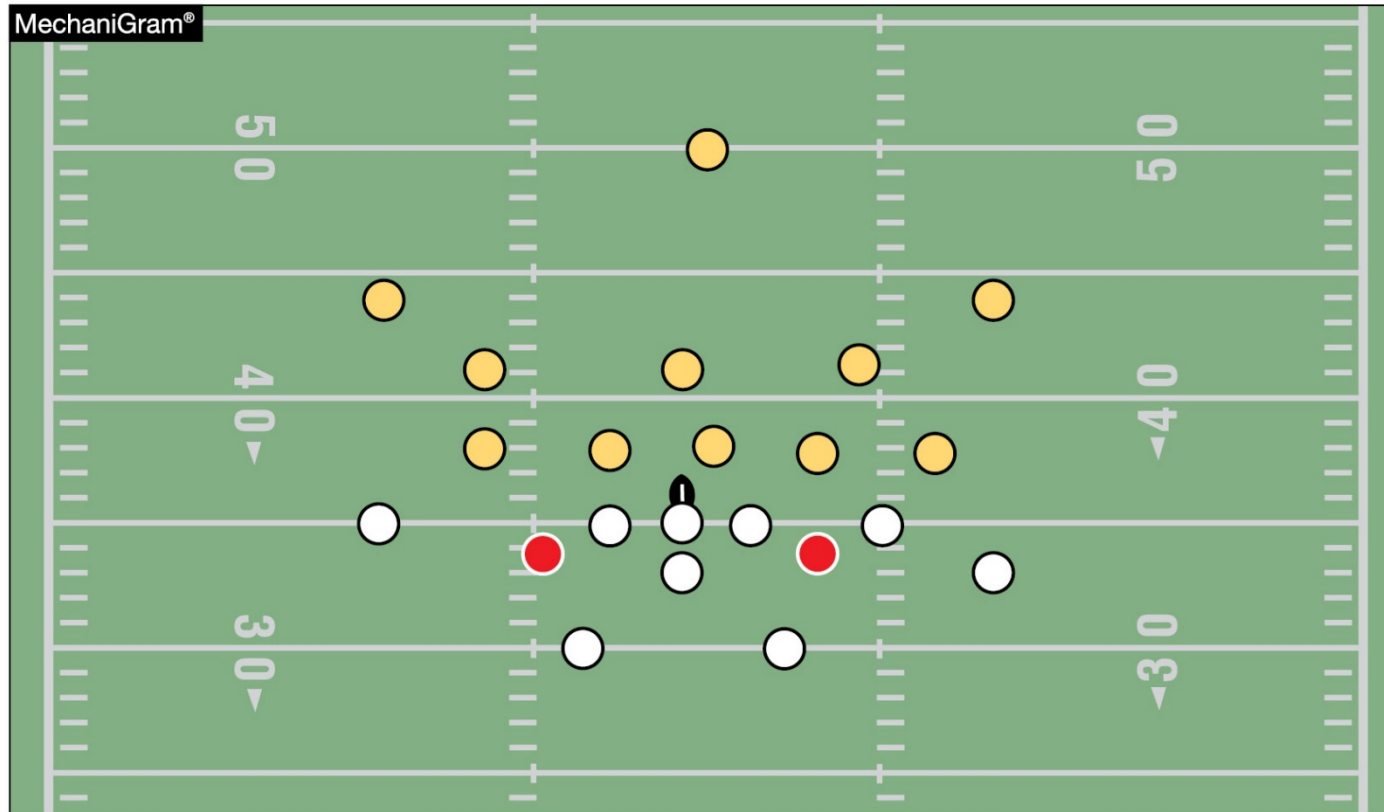
FORMATIONS



LEGAL

A legal formation has no more than four players in the backfield. A back is any A player who has no part of his body breaking the plane of an imaginary line drawn parallel to the line of scrimmage through the waist of the nearest teammate who is legally on the line, except for the player under the snapper, who is also considered a back.

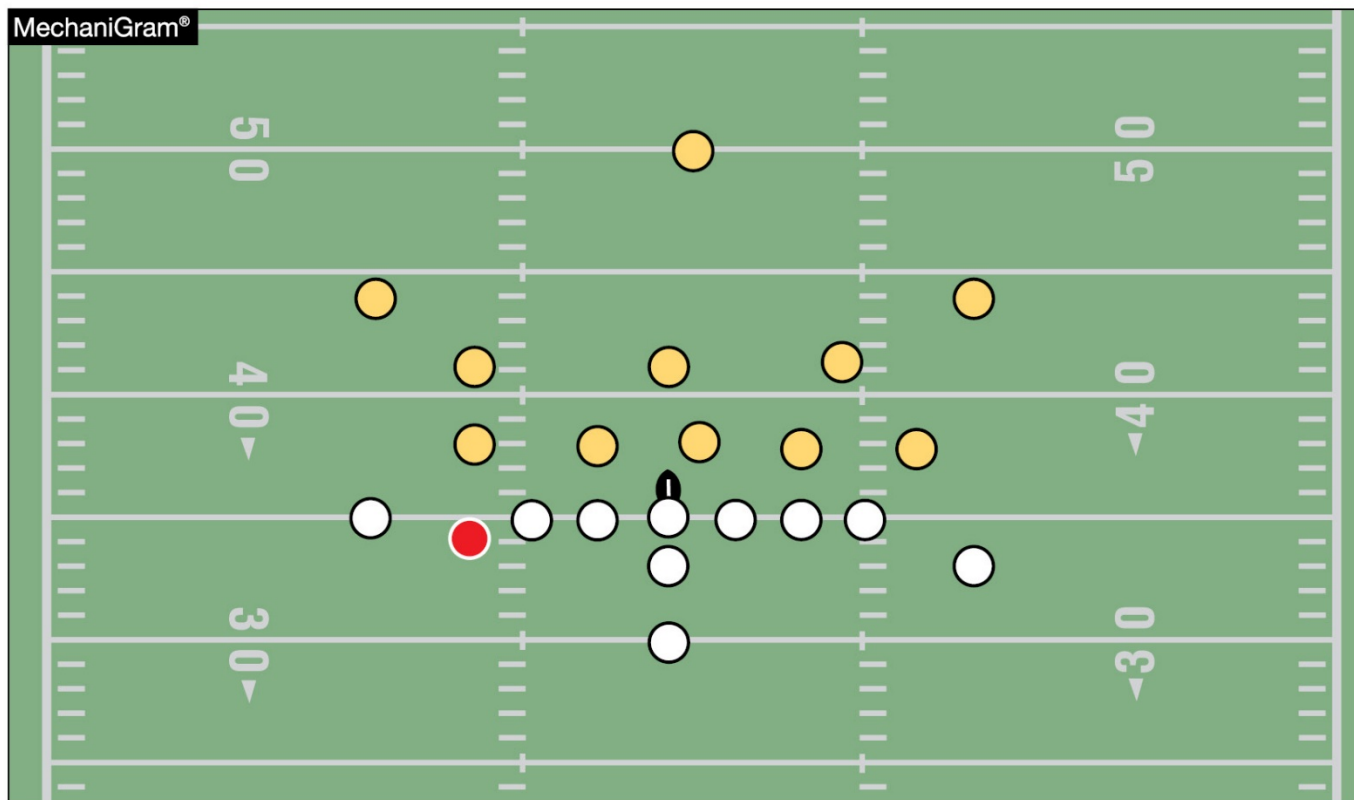
FORMATIONS



ILLEGAL - TACKLES OFF THE LINE

Linemen are legally on the line of scrimmage when they face their opponent's goal line and have head or foot breaking the imaginary plane through the waist of the snapper. It has become fairly common to see guards or tackles line up a yard or two off the ball to aid in pass blocking or pulling.

FORMATIONS



ILLEGAL - PLAYER NEITHER A LINEMAN NOR A BACK

If an offensive player lines up by intersecting the waistline of the tackle, but not the center, Team A has committed an illegal formation foul because all Team A players must be a lineman or back. Receivers who wish to line up as a back should have “daylight” between the rear end of the nearest lineman and their nearest body part.



2024-25 NFHS FOOTBALL INFORMATION



**PLAY.
PERFORM.
COMPETE.
TOGETHER.**



2025 NFHS FOOTBALL RULE CHANGE PROPOSAL ONLINE FORM

Due:

November 1, 2024

**Must be submitted to
your state association
office for approval.**



PLAY.
PERFORM.
COMPETE.
TOGETHER.